



USER GUIDE

ORE

Key Finder



WWW.TRNDLABS.COM

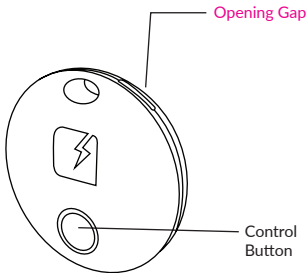
**Thank you for purchasing ORE Key Finder and
welcome to the world of TRNDlabs products.**

ORE Key Finder is a.....

Table of Contents

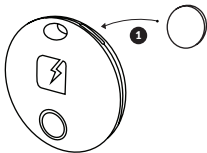
Parts Identification	5
Functions	6
Setup and Charging	8
Specifications	8
Safety Information	9

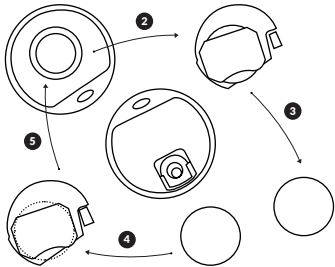
Parts Identification



Replace battery

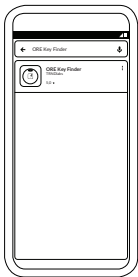
Open the ORE Key Finder with a coin or screw driver **1**. Now remove the battery holder **2**. Remove the battery **3**. Replace with a new battery **4**. Place the battery holder back **5**. Close ORE Key Finder again.





App Installation

- To install the ORE Key Finder App go to the Google Play Store or to Apples Appstore.
- Search for "ORE Key Finder" by TRNDlabs
- Click on ORE Key Finder and click the button "INSTALL"
- When ORE Key Finder is installed click the button "OPEN"
- Now you are shown a short introduction that tells you how to use ORE Key Finder



Specifications

Bluetooth version: Bluetooth 5.0

Operating distance: Up to 33 feet (10 metres)

Impedance: 16 Ω

Earphone Sensitivity: 94 dB/mW

Frequency: 20Hz – 20KHz

Music Playtime: Up to 3 hours music

Talk time: Up to 3 hours

Maximum playtime with Charging Case: Additional
13 hours music/talk time

Input Voltage: 5V/0.5A

Battery Capacity: 50 mAh (Earbuds), 650 mAh (Case)

Charging time: 1.5 hour (Earbud), 1.5 hours (Case)

Dimensions: 29 x 26 x 23 mm (Earbud), 75 x 75 x 36
mm (Case)

Weight: 5 grams (Earbud) 76 grams (Case)

Safety Information

- Do not attempt to charge ORE Key Finder by any means other than a USB charger, power bank or computer.
- Do not modify or disassemble the battery.
- Do not dismantle or modify ORE Key Finder in any way.
- Do not expose ORE Key Finder to moisture or immerse it in liquid.
- Do not keep ORE Key Finder in an environment of excessively high temperatures, including intense sunshine. Only use the product within the following temperatures: 0° - 40°.
- Do not place ORE Key Finder on flammable materials, such as bedding or carpets during charging.
- Do not touch ORE Key Finder with wet hands.
- Disconnect the USB connector from the ORE Key Finder Power Case once fully charged.
- Do not connect input and output in reverse.
- Do not charge ORE Key Finder in excess of the rating suggested.
- In the unlikely event that any liquid from the inside of this product gets into your eyes, do not rub your eyes. Wash your eyes immediately with clean water and consult a physician.
- All of TRNDlabs' products have been tested comprehensively. If you encounter any unusual heat, discoloration or product distortion during charging or storage, please stop using it immediately and contact the dealer. These issues may cause leakage, heat, smoke or ignition of ORE Key Finder.
- ORE Key Finder is not intended for use by persons (including children) with reduced physical, sensory or mental capabilities (or lack of experience and knowledge) unless they have been given supervision or instructions concerning the use of ORE Key Finder by a person responsible for their safety.



The contents of this document are subject to change. Download the latest version from www.trndlabs.com.

If you have any questions about this document, please contact TRNDlabs by sending a message to hello@trndlabs.com.

© 2018 TRNDlabs. All rights reserved.



2756/1/EN